

Download the latest improvements !

Download online the free update for your detector
<http://www.xpmetaldetectors.com/metal-detector/deus-update/>

The new version 4.1 software and accessories have taken the DEUS to yet another new dimension with added performance and versatility. The new MI-6 pinpointer and innovative high-frequency coils have made the Deus far more adaptable to suit a wider range of search scenarios without the need to purchase several different machines to do the same jobs. The DEUS is therefore, once again, the perfect tool for today's serious metal detector users.



New Optional High Frequency coils:

These extremely sensitive coils operate on a wide range of 21 frequencies, ranging from 13 to 81kHz depending on coil choice. Search coils 3 base frequencies:

- 22.5cm (9") Round DD coil:
13 to 15.7kHz, 26 to 31kHz, 50 to 59kHz
- 24 x 13cm Elliptical DD coil :
13 to 15.7kHz, 26 to 31kHz, 68 to 81kHz

Each coil has a further 7 higher or lower sub frequencies to choose from, allowing a much wider adjustment range. (Previous Deus has 3 sub frequencies) The lower frequencies are intended for general use, they provide good sensitivity to a wide range of targets, the higher frequencies will take the Deus to another level... A level never reached with such versatility, accuracy and stability. You will instantly notice the enhanced sensitivity and the ability to find small targets that have previously been difficult or impossible to locate when searching mineralized ground with competing devices. Apart from the ability to detect through mineralized soil, the HF coils will enhance the signature from weak - low conductive targets or even highly conductive targets, that due to their shape or construction (thin or wired) are beyond the reach of conventional detectors,

HF COIL GOLD PROSPECTING



22.5cm HF



Elliptical HF 24 x 13cm

The V4.1 software coupled with the new accessories will further enhance - performance, versatility and ergonomics giving you the ultimate Deus experience.

for example: open rings such as earrings or fine bracelets, wire framed artifacts, gold nuggets, intricate fibula's, small coins, thin coins, etc.

Finally, the new HF coils only weigh 350g and are equipped with the latest higher capacity lithium battery (850mA). The new battery is situated in the lower stem, this is a bonus especially if you are working in a remote area far from a power source

Battery life:

20h at 15kHz - 27h at 30khz - 28h at 55 & 80 kHz

Waterproof: 6 m / 20 ft.

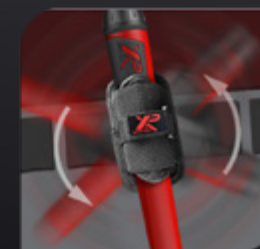


PINPOINTER XP MI-6

The new MI-6 Pinpointer has a wide range of innovative features compared to other products on today's market:

- Audio signal is transmitted directly to the DEUS
- Interference suppression system between MI-6 / DEUS.
- Lithium rechargeable battery with long battery life.
- Waterproof: 6 m / 20 ft.
- Advanced levels of adjustments via the DEUS:
- 50 levels of sensitivity
- Adjustable tones
- 2 audio modes
- Battery level indicator
- 4 programs
- MI-6 recovery mode - find a lost MI-6 even if it has been switched off for several weeks.
- Fast one touch pairing between the MI-6 / Deus.

MI-6
World first connected pinpointer



More information on the MI-6 advert : [MI-6](#)

Specifications can be changed without notification

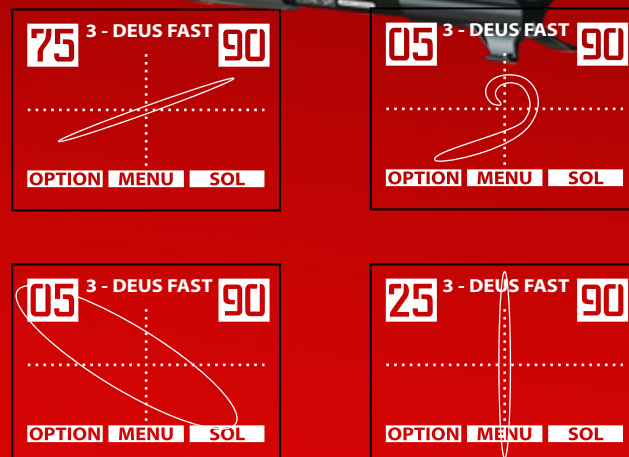
DEUS[®] V4.1



Version 4.1 new features and menus

1 New XY Display

Within the Profile menu is the XY screen option, the XY is an oscilloscope display and can be used as the main screen. The XY display may offer a better visual discrimination aid for certain targets that do not have a specific signature, such as certain large ferrous items, bottle caps etc. The display resolution of the XY trace has 10 levels of magnification thanks to a Zoom function accessible by pressing the Pinpoint button for 2 seconds.



2 New Reactivity 2.5

This level of fast and effective reactivity is a perfect default setting; it represents a good compromise especially when searching new terrain.



3 Improved Programs No10 & No4

Prog 10 Gold field: Advanced audio response and reactivity responses have been added. Excellent performance especially when used in conjunction with the new HF coils...now difficult targets can easily be detected in mineralized ground.

Prog 4 Pitch : Added iron volume and the new reactivity of 2.5 has made pitch more dynamic.



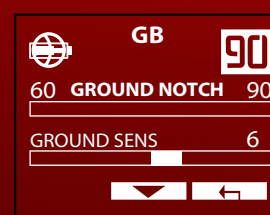
4 Improved ferrous discrimination range

For those who search in all Metal, the negative discrimination of 0 to -6.4 now makes it possible to hear ferrous targets which in the past have been silent or partially rejected. The lower discrimination range can also enhance the signature from deep targets which may have originally been rejected. The lower discrimination can also be an advantage when searching for difficult targets such as ceramics or even meteorites.



5 New menu addition «Ground Sensitivity»

This new setting makes it possible to adjust the machines ability to track soils according to their intensity. This makes it possible to avoid tracking on soils with a low mineralisation. see [V4.1 MANUAL](#)



6 Display and signal processing compatible with the new HF coils

When using a 21-frequency HF coil, the display is now capable of handling detecting frequencies up to 80kHz (18kHz before), as well as 7 frequency offsets (compared to 3 previously).

7 DEUS has a compatibility with a Smartphone

Target and ground data can now be sent via link to a smartphone. The new application will soon be available for the Deus, features include : Mapping of detected signals, view / save your search tracks, log finds plus much more, all accessed from and your smartphone (available summer 2018).

8 New program No9 «HOT»

HOT «The Pro setting» this is a find everything program, based on the Full Tone audio mode with a very low discrimination. Hot is a very interactive program offering excellent feedback and target information.

9 New program No6 «DEEP»

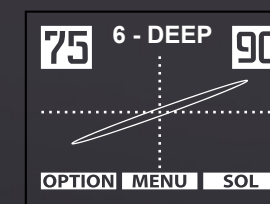
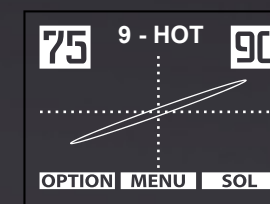
Pro setting for locating deep targets, with moderate discrimination and specific signal processing

10 Improved Non motion Mode

Non motion modes are now more advanced offering better identification on a wider target range, with an improved sensitivity to small targets.

11 Miscellaneous

- Thanks to advances in software, the microprocessor can now work much faster. Navigating the menu is smoother than previous Deus versions, with improved processing. The remote control and the headphones still have a respectable battery life of between 18 and 20 hours.
- Normalization is now a menu feature on XP headphones



- The headphone volume is stored when the unit is switched off
- The serial number is now used as the coil name
- Deleting a coil is done by replacing all the characters with 0.
- Audio tones now have a higher range – 120 to 993 Hz.
- Target Normalization mode ON is now the default. Note: When HF coils are fitted there will be no normalization or TX gain setting available in the menu.

Specifications can be changed without notification

