

INSTRUCTION MANUAL

Contents

pages

Introduction	2
Description.....	4
Assembly.....	5
Alkaline or Rechargeable Batteries, Battery Life, Battery Low Alert	7
Controls.....	9
<i>Start I/O, Sensitivity</i>	9
<i>Discrimination</i>	10
<i>FREQ. SHIFT</i>	12
<i>Ground</i>	14
Detecting Techniques.....	15
Care Instructions	16
Trouble Shooting Problems	18
Advice to Detectorists.....	19
Specifications	20
XP Accessories	21
Warranty conditions	

INTRODUCTION

1

CONGRATULATIONS ON PURCHASING AN XP METAL DETECTOR AND WELCOME TO THE WORLD OF RESEARCH AND EXPLORATION!

You have invested in a high tech detector with extreme performance, designed and developed in France. Therefore, you are taking part in the development of the research in the field of metal detecting undertaken by our company, we thank you for that.

ADVENTIS and ADX 200 are a clever combination of analog/digital technology and benefits from the latest advances in the field. Our knowledge of that technology has led us to integrate a microprocessor to analyze discrimination signals. This microprocessor, faster for discrimination signal analysis, gives our detectors an increased power and stability, as well as a better rejection of unwanted targets.

The development of the ADVENTIS and the ADX200, the ADVENTIS 2 and the ADX250 has led to the inclusion of a new circuit board with specially optimised specifications.

- ✓ *faster target detection through the use of new, more discriminating analogue filters. It will therefore be easier for you to detect targets in iron infested areas.*
- ✓ *the transmitter of the wireless WS1 headphones is now integrated on your detector's circuit board. You can therefore now use your new optional wireless WS1 Two Channel headphones without having to change parts to change channels.*
- ✓ *The new FREQ. SHIFT switch gives you the option of choosing between two working channels for the wireless WS1 headphones – channel 1 or channel 2 – and between two detection frequencies – Freq 1 or Freq 2 – for your detector. You can then search for targets in the same area as another XP detector without any interference issues.*

These two new detectors are also fitted with a new 9" (22.5 cm) carbon fibre search head with a more robust coil cover.

INTRODUCTION

1

You will find it much easier to adjust the controls to optimise your search technique to the type of area you are searching in.

The sharpness of the transition between ferrous and non-ferrous, adjustable with a single turn potentiometer is an addition to maximise performance.

Our high sensibility "double D" search coils, provide very good ground penetration.

You will appreciate the sturdiness and the manufacturing quality of our equipment.

Because a metal detector is generally used in extreme conditions, we have given full attention to the most sensitive parts. ADVENTIS 2 and ADX250 are been developed and manufactured with quality components and material, thus ensuring your XP detector a maximum useful life.

- ✓ Coil Connector, developed by XP: waterproof, gold contacts (30 μ gold plated).
- ✓ Impact resistant polypropylene armrest.
- ✓ Strong Cable, designed to resist movement failures.
- ✓ Robust Waterproof search coil.
- ✓ 3 piece stem
- ✓ Fibreglass lower stem

*The ADVENTIS 2 and the ADX250
are both high performance detectors specially designed
to give you greater ease of use.*

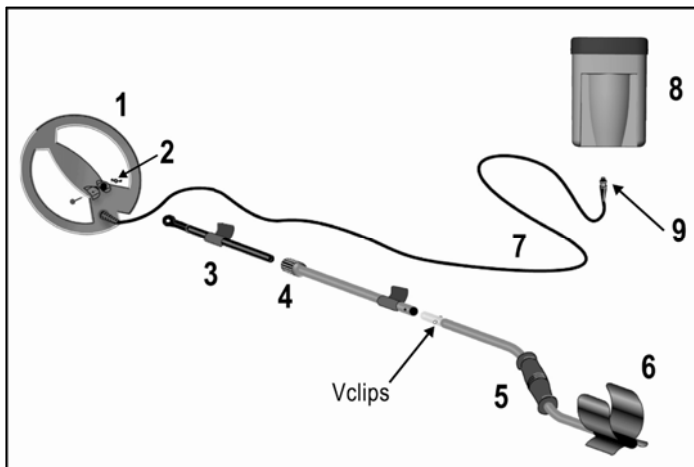
Before using your detector for the first time, we recommend that you read this instruction manual carefully in order to make full use of its abilities.

2

DESCRIPTION

2

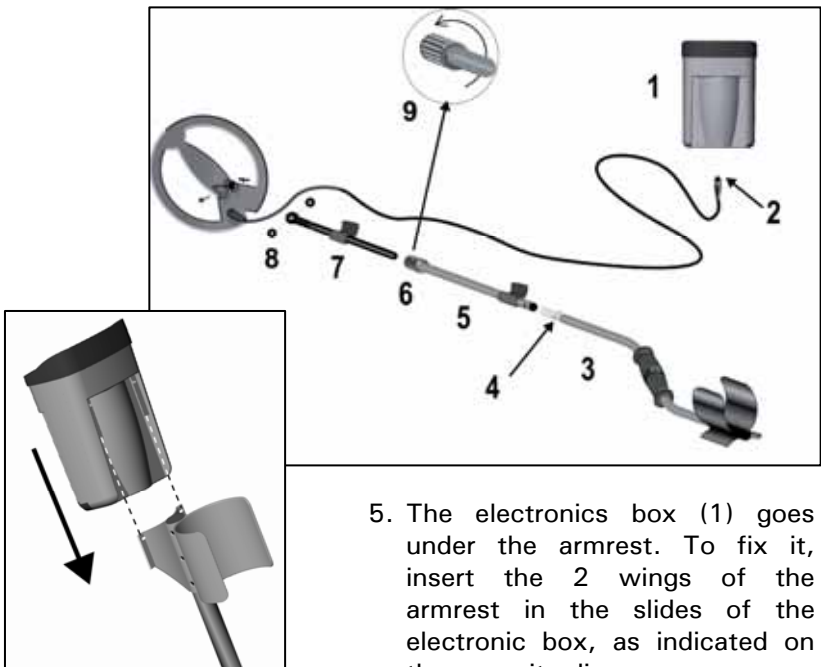
- 1 - Robust, waterproof search coil. Diam. 9" (22.5 cm), provided with coil cover
- 2 – Fibreglass Nut and Bolt
- 3 – Fibreglass lower stem
- 4 - Twist lock
- 5 - Comfortable foam handle
- 6 – Impact resistant polypropylene armrest
- 7 – Strong cable, designed to resist movement failures.
- 8 - ABS electronics box. For a maximum comfort, the box is worn hipmounted. It can also be fixed to the armrest thanks to slide specially designed for that purpose.
- 9 - Waterproof connector.



The assembly of your detector will only take you a few seconds.

Put the shaft together as shown on the diagram.

1. Press the 2 shafts (3) and (5) one towards the other to help the spring clips (4) locate themselves.
2. The twist lock (6) is used to stop the movement of the fiberglass tube (7) inside the aluminium shaft (5). Release it before inserting the fiberglass tube and then lock it without forcing too much as shown on the diagram 9 once it is inserted to the right length.
3. Put the 2 rubber washers on each side of the plastic end (8). To facilitate the insertion you can dampen the rubber washers. Insert the plastic end on the search head and screw the nylon bolt through the hole, lastly attaching the nylon nut.
4. Wind the cable around the shaft.



5. The electronics box (1) goes under the armrest. To fix it, insert the 2 wings of the armrest in the slides of the electronic box, as indicated on the opposite diagram.

ASSEMBLY

3

6. Once the control box is in place under the armrest, insert the connector (female) (2) in its panel connector (male), lock it, the connector is now watertight.

The control box is now fixed under the armrest as indicated on the opposite diagram



① *Disassembling*

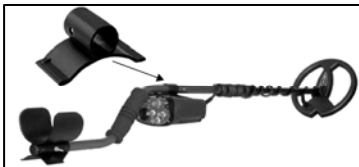
To remove the control box from the armrest, proceed as indicated below.



Put your hands around the control box and press slightly with your thumbs on the side of the armrest ①.

Whilst you keep the pressure on, slip the armrest off, and remove completely the control box from the armrest ②.

① *Optional accessory*



With this optional accessory (XP - 100) you can fix the electronic box on the shaft in front of the handle.

The hipmount bag provided with your detector can allow you protect your detector from rain when the electronic box is fix on the shaft or on the armrest.

ALKALINE OR RECHARGEABLE BATTERY, BATTERY LIFE, BATTERY LOW ALERT

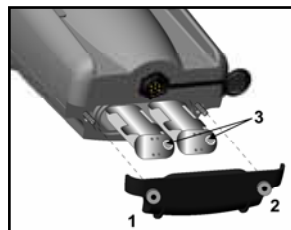
4

ALKALINE BATTERY

ADVENTIS 2 and ADX250 are powered with 12 volts from 8 AA Alkaline batteries using 2 batteries holders, 4 batteries each.

Pay close attention to the battery \pm polarity before inserting the batteries holders in the electronic box.

The metal rivets (3) of the batteries holder must be on the right. Screw the nuts 1 and 2 to close the batteries lid.



*In the event of nonprolonged use,
remove the alkaline batteries from the detector.*

RECHARGEABLE BATTERY

A rechargeable battery pack and a charger will allow you to power your detector.

The insertion of the rechargeable battery pack is similar to the Alkaline batteries pack.

Recharging the batteries can be done in a very simple way:

Always turn off the detector before recharging batteries. Remove the search coil connector of the electronic box and insert the charger instead. 12 to 18 hours are necessary to have a full recharge.

Avoid leaving the batteries recharging for more than 20 hours.

WARNING! Before inserting your charger, check that you are not recharging Alkaline batteries.

ALKALINE OR
RECHARGEABLE
BATTERY, BATTERY
LIFE, BATTERY LOW
ALERT

4

BATTERY LIFE _____

Alkaline batteries about 45 hours with headphones.
Batteries NiMh about 40 hours with headphones.

BATTERY LOW ALERT _____

When the battery voltage is too low to power your detector, the detection "beep" of a metallic target radically changes tonality, it becomes higher pitched.

From then, you only have a few detection hours left, depending on the batteries you are using.

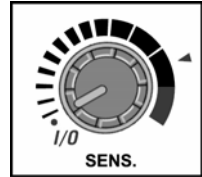
This has the advantage of warning you in plenty of time about the low condition of the batteries without hindering you whilst searching.

START I/O, SENSITIVITY

Turn the machine on with the SENSITIVITY I/O control.

You will hear some quick "beeps" which will tell you that the detector is correctly operating.

Then you can detect.



The control also enables you to adjust the sensitivity of your detector.

The sensitivity level determines the depth of detection and the stability of your machine. It can be adjusted to suit the environment so as not to be plagued with false signals.

Please note that this new detector has a more advanced SENSITIVITY setting compared to previous ADX200 and ADVENTIS models, enabling you to make gradual adjustments to help alleviate false signals.

The range of adjustments has been widened to offer more sensitive adjustments at the top end of the range.

You should therefore not be surprised if you have to lower the potentiometer settings on bad ground. The performance of the machine will not diminish.



Avoid testing your detector inside your house or in shops because you can encounter a lot of metallic and electromagnetic pollution (reinforced concrete, metallic girder and fluorescent lights).

DISCRIMINATION

The discrimination control depends on the 3 positions DISC switch.

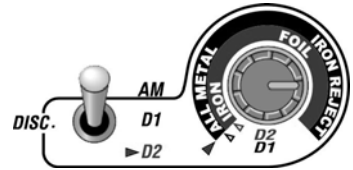
3 options are available:

1ST option : The DISC switch is on the **AM** position ("All metal" mode), the detector is then set up in all metal mode. The discrimination control is deactivated.

This mode can for instance be used to locate a target with more precision. When in **IRON REJECT** (D1 or D2), in some cases, a non-ferrous target can be partially masked by a close-by ferrous target. The **AM** mode, more powerful, will help you locate them.

2ND option : The DISC switch is on the **D1** position (grey area), the discrimination control allows the user to go progressively from the all metal mode (potentiometer to the minimum) to the ferrous metal discrimination (potentiometer to the maximum).

3RD option : The DISC switch is on the **D2** position (red area), the discrimination control rejects ferrous objects on the minimum level and can reject foil on the level shown on the front panel of the detector. On **D2** mode, avoid going beyond the **FOIL** level otherwise you might lose useful small targets.



Before using your detector for the first time, become familiar with the sounds of metallic targets (ferrous/non ferrous).

In IRON REJECT (D1 or D2), a non ferrous target will produce a deep, full sound which can be repeated at the same spot with each sweep. Most of the ferrous targets will be silent or might produce a choppy sound (short "pops" or "clicks") which can be easily recognized.

NOTE

Experienced Detectorists must forget their concerns over the discrimination levels they must not go beyond. The D1 mode is very soft, it doesn't go over iron rejection, so you should not fear pushing the setting 3/4 to the right.

FREQ. SHIFT.

The FREQ. SHIFT switch eliminates interference which would otherwise be caused between two XP detectors used within close proximity of each other.



It can act on two settings simultaneously:
the working frequency of your detector:

✓ *Freq1 ou Freq 2*

the wireless WS1 2 Channel headphone output channel:

✓ *CH1 ou CH2*

How to use the FREQ. SHIFT. switch.

*If you are working ALONE without your wireless WS1 headphones:
 it is better to use FREQ. SHIFT.*

✓ *on the middle setting: DETECT Freq1 / WS1 OFF position*

The wireless WS1 headphone output will be switched off and therefore not use up power. The detector will be set on frequency 1.

*If you are working ALONE with your wireless WS1 headphones:
 you can use FREQ. SHIFT.*

✓ *on a low setting: DETECT Freq 1 / WS1 CH2 position*

✓ *on a high setting: DETECT Freq 2 / WS1 CH1 position*

You should also consider adjusting the input channel of the wireless WS1 headphones on the earpiece. Simultaneously hold down the ± buttons for five seconds. See the wireless WS1 Two Channel headphones user manual for more information.

*If you are working WITH A PARTNER without the WS1 headphones:
you can use FREQ. SHIFT.*

- ✓ *on the middle setting: DETECT Freq1 / WS1 OFF position on YOUR device.*
- ✓ *on a high setting: DETECT Freq 2 / WS1 CH1 position on your partner's device, even if they are not using a wireless WS1 headset.*

*If you are working WITH A PARTNER, with the wireless WS1 headphones:
you can use FREQ. SHIFT*

- ✓ *on a low setting: DETECT Freq 1 / WS1 CH2 position for YOUR device*
- ✓ *on a high setting: DETECT Freq 2 / WS1 CH1 position for your partner's device.*

In any event, please refer to the wireless WS1 Two Channel headphones user manual before use.

GROUND

Control not available on ADX200

With this control you can correct ground effects and more accurately reject ferrous minerals or any pottery containing iron oxides.



If you are prospecting on grounds loaded with magnetic stones, it might be a good idea to keep a sample of these stones on you to adjust your detector before detecting this type of ground. You only need to move a magnetic stone in front of the search coil turning slowly the GROUND control from left to right so as to obtain a total rejection of the stone.

If the mineralization is too scattered, sweep the head on the ground and turn the control progressively from left to right in order to get good stable detector. On mineralised grounds, these procedures will optimise your searches.



For maximum depth detection, do not turn this setting towards the right more than necessary. The red arrow indicates a basic position suitable for most ground.

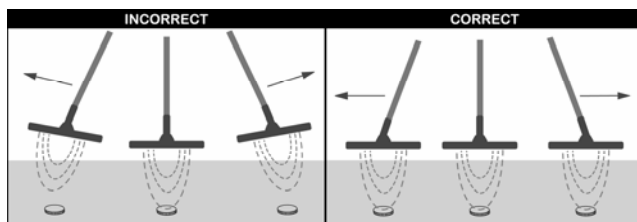
DETECTING TECHNIQUES

6

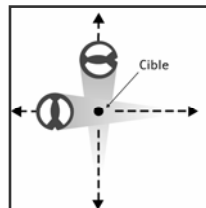
ADVENTIS 2 and ADX250 are motion detectors, which means that a target detection can be carried out only when the search coil is moving.

When you detect an area, it is important to sweep with the head as close as possible to the ground with wide movements, but not making contact with the ground.

Keep the head parallel to the ground following the relief as much as possible.



To pinpoint a target, use quick crossed sweeps, with the coil over the target taking note of where the strongest audio signal is received. The exact location of the target is under the centre line of the search coil from front to back and can then be determined by 'x ing'.



If you feel the performance of your detector is not at it's best:

1. The discrimination is too high,
 - ⇒ Set it in D1 mode with the discrimination control set to the equivalent of 2 o'clock or less.
2. The ground rejection is too high, (only on ADVENTIS)
 - ⇒ Adjust GROUND control towards the equivalent of a 12 o'clock position or less if the ground doesn't give false signals.

CARE INSTRUCTIONS

7

Our detectors are designed to be as robust as possible, however, like any electronic precision instrument, they require some care.

The XP search coil cable has been designed so as to resist long term movement. However you should take some precautions and prolong the life of your detector :

⇒ to remove the connector from the control box, it is important never to pull the cable but the connector.

⇒ It is important to leave enough slack at the bottom of the cable near the coil to allow for adjusting the coil angle without placing strain on the coil.

⇒ It is important not to replace the Velcro with tape as this will centre the movement on one single part of the cable.

⇒ when the box is hipmounted, put it on your side or on your back in order not to fold the cable of the connector when you lean forward. (Diagram 1)

⇒ when the box is hipmounted, to prevent strain on cable and connector, you should slide the cable through the hipmount bag belt strap. Diagram 2

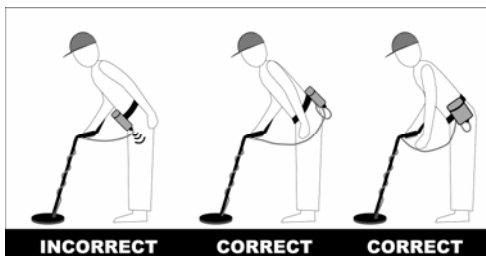


Diagram 1

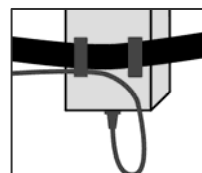


Diagram 2

CARE INSTRUCTIONS

7

Not adhering to these precautions will lead to long term damage of the cable and void the warranty due to user negligence.

⚡ In the event of nonprolonged use, remove the alkaline batteries from the detector.

⚡ Do not expose your detector to high temperatures.

TROUBLE SHOOTING PROBLEMS

9

TROUBLE	CAUSES	SOLUTIONS
The sound changes its tone, it becomes more high pitched when encountering metallic targets .	⇒ Low batteries.	Change the batteries.
	⇒ Wrong polarity	Check if you have correctly inserted the batteries in each pack. One battery might be in the wrong way around.
You can't start your detector.	⇒ Batteries are badly inserted or upside down.	Check the way the batteries have been inserted in the 2 battery holders (refer to chapter 4)
	⇒ A 6.35 plug is inserted in the headphone plug.	Remove it.
	⇒ The loudspeaker is defective.	Plug in headphones to check.
You notice excessive false signals without reasons	⇒ The sensitivity is too high.	Lower it.
	⇒ The search coil connector is badly locked to the control box	Lock it without forcing.
	⇒ Your headphone cable is defective.	Change the headphones.
	⇒ You are passing through an area with a lot of interference (high voltage cable, electric transformer, electric fence).	Lower the sensitivity or get away from this area.
	⇒ You are close to other metal detectors.	Change frequency due to FREQ. SHIFT (refer to chap.5)
You notice false signals when the search head knocks the ground.	⇒ GROUND control is too low.	ADVENTIS 2: turn the GROUND control slightly to the right until false signals stop.
		ADX250 : ask your retailer to check the internal setting of GROUND control
The detector beeps on potteries, bricks or with certain stones.	⇒ GROUND control is too low.	ADVENTIS 2: turn the GROUND control slightly to the right until false signals stop.
		ADX250 : ask your retailer to check the internal setting of GROUND control

If the problem persists, contact your retailer for advice.

Detecting is an activity, which like other leisure activities requires some guiding principles. These few recommendations will allow you to fully enjoy it while respecting laws, environment and other people.

- *Enquire about and abide by the laws in force of the country or the state before searching. It is of your responsibility to know them and to abide by them.*
- *Always ask the permission of the land owners where you want to search.*
- *Have regard for the natural environment in which you are searching.*
- *Don't forget to backfill all holes you dig.*



Avoid detecting in zones where battles took place during the wars. Report any suspect object you might discover to the authorities.

S P E C I F I C A T I O N S

10

BATTERIES

8 AA Alkaline batteries or rechargeable NiMH batteries (optional).

ELECTRONIC BOX

ABS electronic box. It can be worn under the armrest, in front of the hand (using the optional mount) or hip-mounted.

SEARCH COIL

Wide scan (Double D), Diameter : 9" (22.5 cm), provided with coil cover.

Cable length : 2.35 m

WIRELESS TRANSMISSION

WS1 2 Channel transmitter CH1/CH2, include .

SHAFT

In 3 parts, which can be dismantled, Fibreglass lower stem.

LOUDSPEAKER

28 mm, 8 ohms, Weather resistant

HEADPHONES

Jack 6.35 stereo

FREQUENCIES

Freq 1 : 4590 HZ - Freq 2 : 4460 HZ

WEIGHT

Box	340 gr
Head with cable	480 gr
Head + shaft + control box + hipmount bag	1425 gr
Full package	2100 gr

WARRANTY

Control unit & Search coil 2 years parts and labour

XP ACCESSORIES

11



Standard Searchcoil DD 9" (22.5 cm)
provided with coil cover



Elliptical Search coil
5" x 10" (11/24cm)
provided with coil cover



Search coil DD 45x38 cm



Searchcoil DD High Energy 11"
(27 cm) provided with coil cover



Concentric search coil 25x21 cm
provided with coil cover

New wireless Headphone ***WS1 2 Channel***

Specially designed for XP Metal Detectors.



- ✓ 2 selectable channels.
- ✓ Digital sound transmission by microprocessor
- ✓ The radio transmitter is directly integrated into our detectors' circuit boards
XP : ADX250-ADVENTIS II – GMAXX II – GOLDMAXX power
- ✓ Miniaturised electronics
- ✓ Removable earpiece
- ✓ Compact and lightweight, the headphone weighs less than 70g, battery included.
- ✓ Headphone built in edge extra flat rechargeable Lithium battery (7g)
- ✓ battery life : 50 hours
- ✓ Fast Lithium charger: full charge in 2 hours.
- ✓ Charge monitoring system and full charge LED
- ✓ Adjustable/Memorizable volume



New Hipmount bag. It can be used to protect electronic box from rain when it fix on shaft or on armrest.



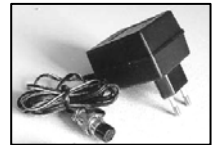
XP transport bag



XP - 100 : optional accessory use to fix the electronic box on the shaft in front of the handle.



NiMh Batteries



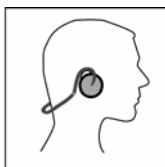
Batteries charger



XP Cap



XP T-shirt
100% cotton
Sizes M, L, XL



Backphone FX-01

- Audio level adjust
- Impedance and sound adapted to our detectors
- 6.35 jack adaptator
- Foldable in 3 parts

Declaration of conformity for E.C

This declaration is the responsibility of manufacturer: XPLOREER Sarl - 40 ch du Moulin – 31320 Mervilla - France

This certifies that the following designated product WS1 complies with the essential protection requirements of R&TTE Directive 1999/5/EC on the approximation of the law of the Member States relating to the Radio Spectrum Matters, EMC and Electrical Safety.

Assessment of compliance of the product with the requirements relating to the essential requirements of the Directive and the unified standard EN300220 and EN300330.



WARRANTY CONDITIONS

XPLORER ensures a contractual warranty from the date of the purchase.

- ▶ 24 months on the electronic box , the search coil, detector shaft and its components (armrest, twist lock...) and on the battery charger.

If warranty service should be necessary, the detector must be returned to the retailer, complete, with proof of purchase and a notice explaining the fault.

Where a faulty detector has been replaced by a new or reconditioned detector, the warranty will carry on.

This warranty (parts and labour) does not cover:

- ▶ damage due to a fall, shock or accident,
- ▶ deteriorations due to an anormal use,
- ▶ cable breakage of the search coil or of one of its conductors,
- ▶ the coil cover.

Any alteration of the electronic circuit by an unauthorised person will lead to breach of warranty.

XPLORER reserves the right to change the design or specifications of its detectors without notice .



www.xpmetaldetectors.com

Web site

e-mail info@xpmetaldetectors.com

XPLORER S.a.r.l. - 40 chemin du moulin - 31320 MERVILLA (France)

Fax : + 33 (0)5 61 73 48 39

XP and Gold MAXX are XPLORER S.a.r.l. trade marks